



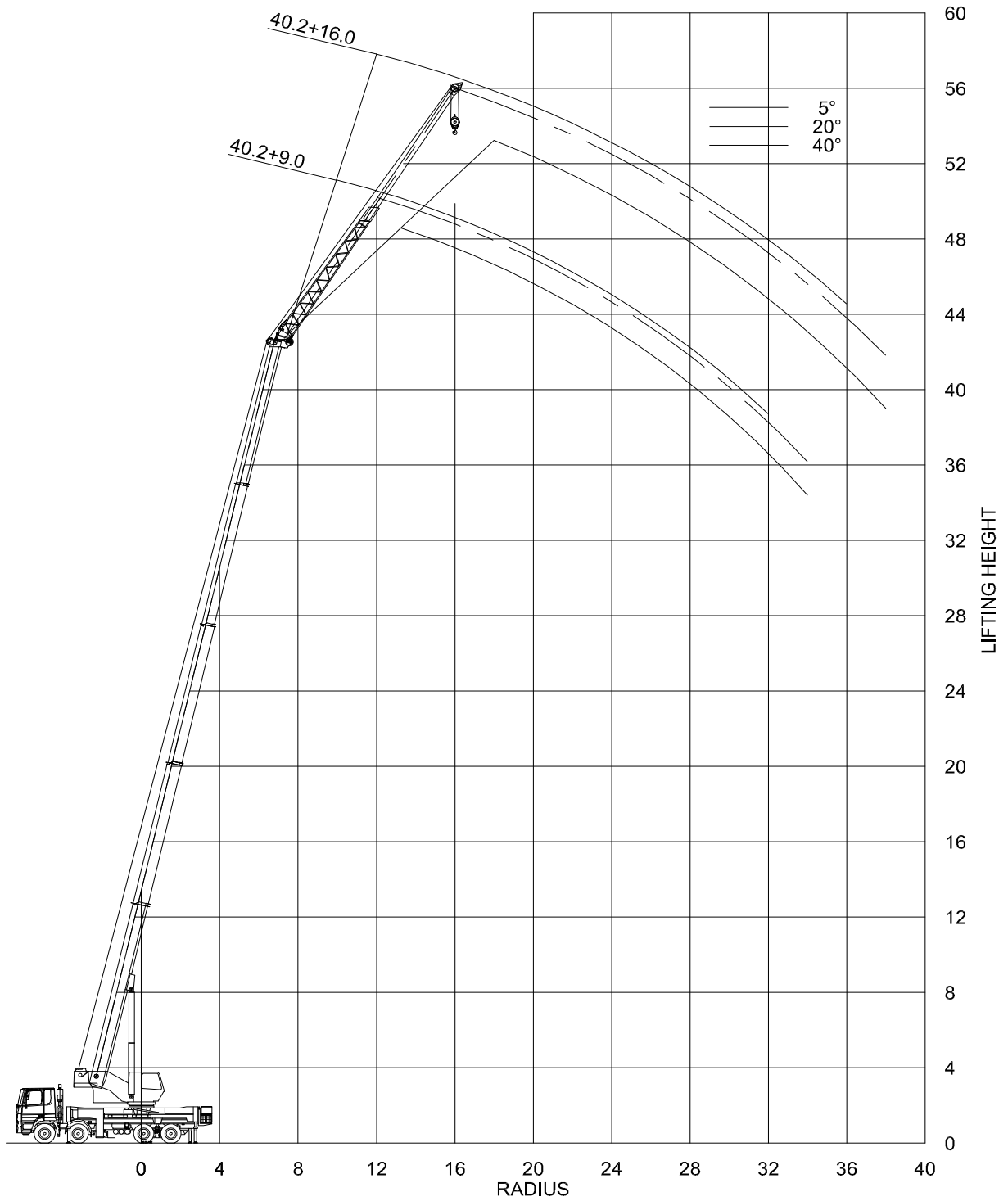
FAUN HK60 (SH)

Outrigger base: 6.45x6.28m

Ballast: 8.4t / 7.3t

		Mainboom (outrigger base 6.45x6.28m)																											
Ballast	Boomlength	Radius																											
		2.5	3	3.5	4	4.5	5	6	7	8	9	10	11	12	14	16	18	20	22	24	26	28	30	32					
8.4	10.4	50	44.5	40.4	37	34	31.5	27.3	23.6	16.8																			
	14.1		30	30	30	30	30	26.7	22.6	17.8	14.5	12.1	10.2																
	17.8			30	29	27.6	26.2	22.6	19.8	17.3	14	11.6	9.7	8.3	6														
	25.3							17	17	15.8	14.5	13.3	12	10.3	8.8	6.6	4.9	3.7	2.7	1.9									
	32.7								13	13	13	12	11	10.1	9.2	7.1	5.5	4.2	3.2	2.5	1.8	1.3	0.9	0.6					
	36.5									9	8.8	8.5	8.3	8.1	7.3	5.7	4.5	3.5	2.7	2.1	1.6	1.2	0.8	0.5					
	40.2									7	7	7	7	7	7	6.5	5.9	4.7	3.7	2.9	2.3	1.8	1.4	1	0.7				
7.3	10.4	50	44.5	40.4	37	34	31.5	27.3	22.6	16.8																			
	14.1		30	30	30	30	30	26.7	21.6	17	13.8	11.4	9.6																
	17.8			30	29	27.6	26.2	22.6	19.8	16.4	13.3	10.9	9.1	7.7	5.5														
	25.3							17	17	15.8	14.5	13.3	11.6	9.7	8.3	6.1	4.5	3.3	2.3	1.6									
	32.7								13	13	13	12	11	9.8	8.6	6.7	5	3.8	2.9	2.1	1.6	1.1							
	36.5									9	8.8	8.5	8.3	8.1	6.8	5.3	4.1	3.1	2.4	1.8	1.3								
	40.2									7	7	7	7	7	7	6.5	5.4	4.3	3.4	2.6	2	1.5							

		Mainboom (outrigger base 6.45x6.28m)																											
Ballast	Boomlength	Radius																											
		2.5	3	3.5	4	4.5	5	6	7	8	9	10	11	12	14	16	18	20	22	24	26	28	30	32					
8.4	10.4	44.5	39.6	35.6	32.2	29.4	27	19.3	14.7	11.6																			
	14.1		30	30	30	27.5	23.6	18	13.8	10.8	8.6	7.1	5.8																
	17.8			30	28.7	24.2	21	16.1	12.8	10.2	8.1	6.6	5.3	4.4	2.9														
	25.3							17	14.8	12	9.9	8.3	7	5.9	4.9	3.4	2.3	1.5	0.9										
	32.7								13	11.3	9.5	8.1	7	6	5.2	3.9	2.8	2	1.4	0.8									
	36.5									9	8	6.9	6	5.2	4	3.1	2.3	1.6	1.1	0.7									
	40.2									7	7	7	7	6	5.3	4.1	3.2	2.5	1.8	1.3	0.9	0.5							
7.3	10.4	44	39.4	35.4	32	29.2	25.6	18.2	13.8	10.9																			
	14.1		30	30	30	25.9	22.2	17	12.9	10.1	8	6.5	5.3																
	17.8			30	27.1	22.9	19.7	15.1	12	9.5	7.5	6	4.9	4	2.5														
	25.3							17	13.9	11.1	9.2	7.6	6.4	5.4	4.5	3.1	2	1.3	0.6										
	32.7								13	10.7	8.9	7.5	6.4	5.5	4.7	3.5	2.5	1.7	1.1	0.6									
	36.5									8.8	7.5	6.4	5.6	4.8	3.6	2.7	2	1.4	0.9	0.5									
	40.2									7	7	6.4	5.6	4.9	3.7	2.9	2.2	1.6	1.1	0.7									





FAUN HK60 (SF)

Outrigger base: 6.45x6.28m
 Offset: 5/20/40°
 Ballast: 8.4t / 7.3t

Mainboom with fixed jib (outrigger base 6.45x6.28m)																				
Ballast	Boomlength	Radius																		
				10	11	12	14	16	18	20	22	24	26	28	30	32	34	36	38	
8.4	10.4	9	5	4.8	4.8	4.8	4.6	4.3	4.1	3.6	2.9	2.2	1.7	1.3	0.9	0.6				
			20			3.8	3.6	3.3	3.1	2.9	2.8	2.5	1.9	1.4	1	0.7				
			40				2.5	2.4	2.3	2.2	2.1	2.1	2	1.6	1.2	0.8				
		16	5			2.2	2.2	2.2	2.1	2.1	2	1.9	1.8	1.7	1.5	1.2	0.9	0.6		
			20					1.8	1.7	1.7	1.6	1.5	1.5	1.4	1.3	1.2	1.1	0.8	0.6	
			40						1.3	1.3	1.2	1.2	1.2	1.1	1.1	1.1	1	1	0.7	
	14.1	9	5	4.8	4.8	4.8	4.6	4.3	4.1	3.6	2.9	2.2	1.7	1.3	0.9	0.6				
			20			3.8	3.6	3.3	3.1	2.9	2.8	2.5	1.9	1.4	1	0.7				
			40				2.5	2.4	2.3	2.2	2.1	2.1	2	1.6	1.2	0.8				
		16	5			2.2	2.2	2.2	2.1	2.1	2	1.9	1.8	1.7	1.5	1.2	0.9	0.6		
			20					1.8	1.7	1.7	1.6	1.5	1.5	1.4	1.3	1.2	1.1	0.8	0.6	
			40						1.3	1.3	1.2	1.2	1.2	1.1	1.1	1.1	1	1	0.7	
	17.8	9	5	4.8	4.8	4.8	4.6	4.3	4.1	3.6	2.9	2.2	1.7	1.3	0.9	0.6				
			20			3.8	3.6	3.3	3.1	2.9	2.8	2.5	1.9	1.4	1	0.7				
			40				2.5	2.4	2.3	2.2	2.1	2.1	2	1.6	1.2	0.8				
		16	5			2.2	2.2	2.2	2.1	2.1	2	1.9	1.8	1.7	1.5	1.2	0.9	0.6		
			20					1.8	1.7	1.7	1.6	1.5	1.5	1.4	1.3	1.2	1.1	0.8	0.6	
			40						1.3	1.3	1.2	1.2	1.2	1.1	1.1	1.1	1	1	0.7	
	25.3	9	5	4.8	4.8	4.8	4.6	4.3	4.1	3.6	2.9	2.2	1.7	1.3	0.9	0.6				
			20			3.8	3.6	3.3	3.1	2.9	2.8	2.5	1.9	1.4	1	0.7				
			40				2.5	2.4	2.3	2.2	2.1	2.1	2	1.6	1.2	0.8				
		16	5			2.2	2.2	2.2	2.1	2.1	2	1.9	1.8	1.7	1.5	1.2	0.9	0.6		
			20					1.8	1.7	1.7	1.6	1.5	1.5	1.4	1.3	1.2	1.1	0.8	0.6	
			40						1.3	1.3	1.2	1.2	1.2	1.1	1.1	1.1	1	1	0.7	
32.7	9	5	4.8	4.8	4.8	4.6	4.3	4.1	3.6	2.9	2.2	1.7	1.3	0.9	0.6					
		20			3.8	3.6	3.3	3.1	2.9	2.8	2.5	1.9	1.4	1	0.7					
		40				2.5	2.4	2.3	2.2	2.1	2.1	2	1.6	1.2	0.8					
	16	5			2.2	2.2	2.2	2.1	2.1	2	1.9	1.8	1.7	1.5	1.2	0.9	0.6			
		20					1.8	1.7	1.7	1.6	1.5	1.5	1.4	1.3	1.2	1.1	0.8	0.6		
		40						1.3	1.3	1.2	1.2	1.2	1.1	1.1	1.1	1	1	0.7		
36.5	9	5	4.8	4.8	4.8	4.6	4.3	4.1	3.6	2.9	2.2	1.7	1.3	0.9	0.6					
		20			3.8	3.6	3.3	3.1	2.9	2.8	2.5	1.9	1.4	1	0.7					
		40				2.5	2.4	2.3	2.2	2.1	2.1	2	1.6	1.2	0.8					
	16	5			2.2	2.2	2.2	2.1	2.1	2	1.9	1.8	1.7	1.5	1.2	0.9	0.6			
		20					1.8	1.7	1.7	1.6	1.5	1.5	1.4	1.3	1.2	1.1	0.8	0.6		
		40						1.3	1.3	1.2	1.2	1.2	1.1	1.1	1.1	1	1	0.7		
40.2	9	5	3.8	3.8	3.8	3.8	3.7	3.6	3.4	2.9	2.3	1.8	1.4	1	0.7					
		20			3.4	3.4	3.3	3.1	3	2.9	2.6	2	1.5	1.1	0.8	0.5				
		40				2.5	2.5	2.4	2.3	2.2	2.1	2.1	1.7	1.3	0.9	0.6				
	16	5			2.2	2.2	2.2	2.1	2.1	2	1.9	1.8	1.7	1.5	1.2	0.9	0.6			
		20					1.8	1.7	1.7	1.6	1.5	1.5	1.4	1.3	1.2	1.1	0.8	0.6		
		40						1.3	1.3	1.2	1.2	1.2	1.1	1.1	1.1	1	1	0.7		