

FAUN HK70 (SH)

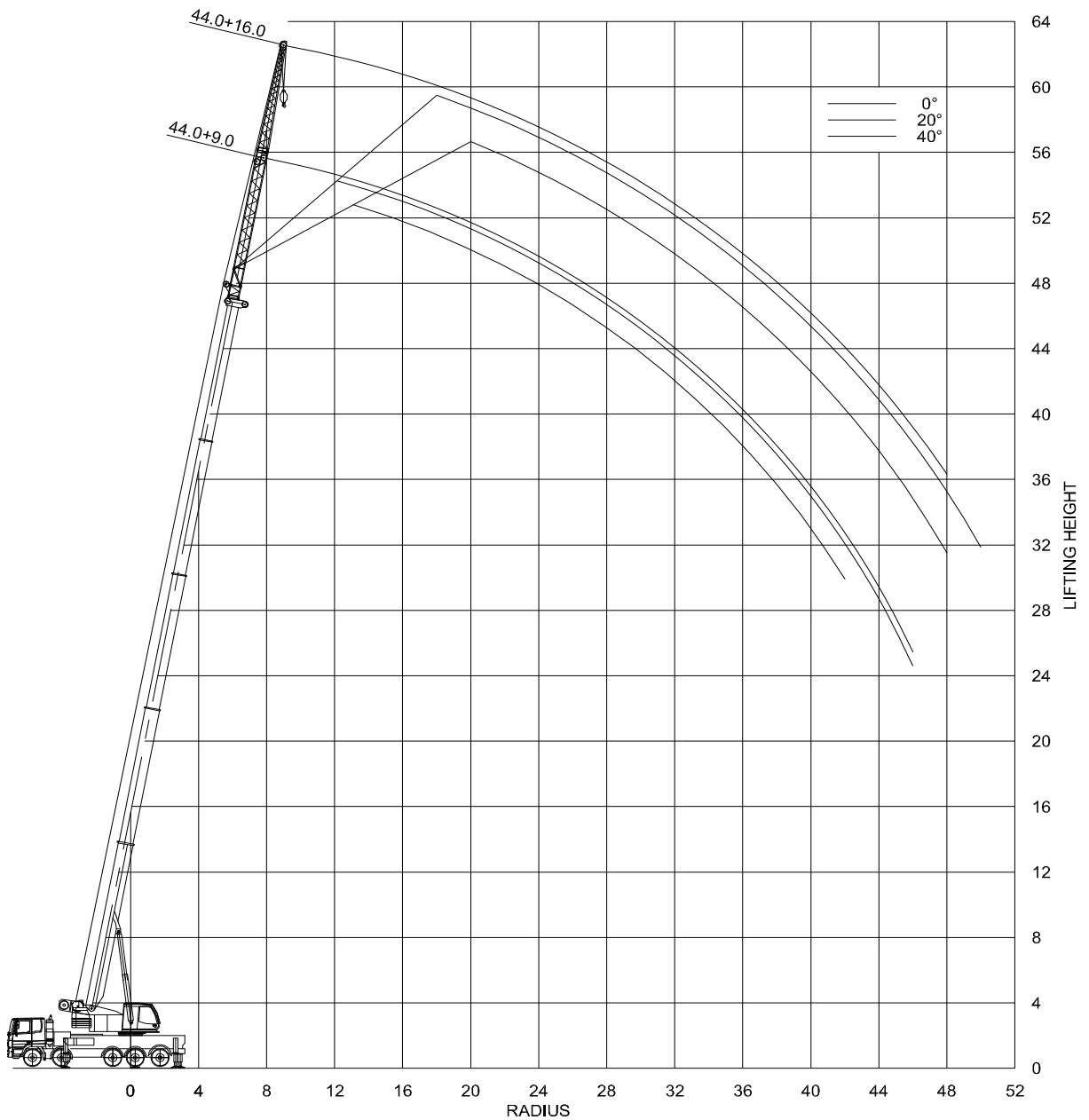
Outrigger base: 6.5x6.3m / 6.3x4.8m

Ballast: 15.2t / 6.1t

Mainboom (Outrigger base 6.5x6.3m)																			
Ballast	Boomlength	Radius																	
		3	4	5	6	7	8	9	10	12	14	16	18	20	24	28	32	36	40
15.2	11	54.7	43.7	36	30.3	26	22.6												
	14.8	50	43.6	35.9	30.2	25.9	22.5	19.8	17.6	13.7									
	18.7	40	40	35.7	30	25.7	22.3	19.6	17.4	13.4	10.2	8.1							
	22.5		34.9	31.6	28.6	25.9	22.5	19.7	17.5	13.6	10.4	8.2	6.6	5.4					
	26.3		30	30	28.4	26	23.1	20.4	18.1	14.4	11.1	8.9	7.3	6					
	30.1			22	19.9	18.1	16.5	15.2	14	12.1	10.4	8.2	6.6	5.4	3.6				
	34			18.5	18.1	16.6	15.3	14.1	13.1	11.4	10	8.6	7	5.8	4	2.8			
	37.8				14	14	14	14	13.1	12.2	10.7	9.4	8.4	7.2	5.9	4.1	2.9	2.1	
	41.6					10.4	10.4	10.4	10.4	9.9	8.9	7.9	7.1	6.2	4.4	3.2	2.3	1.7	
	44					9.2	9.2	9.2	9.2	9	7.8	6.8	6	5.3	4.2	3.2	2.3	1.7	1.2

Mainboom Over Rear (Outrigger base 6.5x6.3m)										
Boomlength	Ballast	Radius								
		2.5	3	3.5	4	4.5	5	6	7	8
11	15.2	70	63.6	56.7	49.3	43.5	38.9	31.9	26.9	23.2
	6.1	70	59.9	51	44.3	39.1	34.9	28.6	24	20.5

Mainboom (Outrigger base 6.3x4.8m)																		
Ballast	Boomlength	Radius																
		3	4	5	6	7	8	9	10	12	14	16	18	20	24	28	32	36
15.2	11	49.2	38.8	31.7	26.5	22.6	19.4											
	14.8	49.2	38.8	31.6	26.4	22.5	19.3	15.8	13.2	9.7								
	18.7	40	38.6	31.4	26.2	22.3	19	15.6	13	9.5	7.2	5.6						
	22.5		34.9	31.6	26.4	21.8	18.3	15.7	13.2	9.6	7.3	5.7	4.5	3.6				
	26.3		27.3	24.5	22	19.9	17.3	14.9	12.9	9.5	7.2	5.6	4.4	3.4				
	30.1			22.2	20.1	18.3	16.8	14.8	13	10	7.7	6	4.8	3.9	2.5			
	34			18.5	18.1	16.6	15.3	14.1	12.6	9.9	7.8	6.1	4.9	3.9	2.6	1.6		
	37.8				14	14	14	14	13.1	12.2	9.8	7.9	6.3	5	4.1	2.7	1.8	1.1
	41.6					10.4	10.4	10.4	10.4	9.8	8	6.5	5.3	4.3	2.9	2	1.3	0.8
	44					9.2	9.2	9.2	9.2	9	7.8	6.5	5.3	4.3	2.9	2	1.3	0.8





FAUN HK70 (SF)

Outrigger base: 6.5x6.3m / 6.3x4.8m

Ballast: 15.2t / 6.1t

Mainboom with Fixed Jib (Outrigger base 6.5x6.3m)																									
Ballast	Jiblength	Boomlength	Jibangle	Radius																					
				3	4	5	6	7	8	9	10	12	14	16	18	20	22	24	26	28	32	36	40	44	48
15.2	9	11	0	10.5	10.5	10.5	10.5	10.5	10.5	10.4	9.5	8.1	7.1	6.3											
			20		10.5	10.5	10.5	9.9	9.4	8.9	8.5	7.8	7.2	6.8											
			40				8.9	8.5	8.1	7.8	7.5	7	6.7												
		30.1	0			10.5	10.5	10.5	10.1	9.6	9	8.1	7.3	6.7	6.2	5.8	5.4	5.1	4.8	4.4	3.8	3.2	2.3	1.6	
	20							8.1	7.7	7.3	6.7	6.2	5.8	5.4	5.1	4.8	4.4	3.8	3.2	2.3					
	40									6.4	5.9	5.5	5.2	4.9	4.7	4.5	4.3	4	3.4						
	41.6	0					6	6	6	6	5.7	5.2	4.8	4.4	4.1	3.8	3.6	3.2	2.9	2.3	1.6	1.1	0.7		
		20									5.2	4.9	4.5	4.3	4	3.7	3.5	3.3	3	2.4	1.8	1.2	0.8		
		40									4.4	4.2	3.9	3.7	3.5	3.4	3.2	3	2.5	1.9	1.3				
	44	0						5.4	5.4	5.4	5.3	4.9	4.5	4.2	3.8	3.6	3.3	2.9	2.6	2	1.6	1.1	0.7		
		20								4.9	4.6	4.3	4	3.8	3.5	3.3	3	2.7	2.2	1.7	1.2	0.8			
		40								4.3	4	3.8	3.6	3.4	3.2	3	2.7	2.2	1.8	1.3					
16	11	0	7.9	7.9	7.9	7.6	7.2	6.7	6.3	5.9	5.3	4.7	4.2	3.7	3.4	3.1	2.8								
		20						5.4	5.1	4.9	4.4	4.1	3.8	3.5	3.3	3.2	3.1								
		40									3.9	3.7	3.4	3.3	3.2	3.1									
	30.1	0				4.8	4.8	4.8	4.8	4.8	4.8	4.8	4.8	4.8	4.8	4.6	4.3	4.1	3.7	3.4	2.5	1.8	1.3	1	
		20									4.6	4.4	4.2	4	3.8	3.6	3.5	3.3	3.2	2.8	2	1.5			
		40										3.5	3.4	3.3	3.2	3.1	3	2.9	2.7	2.2	2.2				
	41.6	0						3.5	3.5	3.5	3.5	3.5	3.5	3.5	3.5	3.5	3.2	3	2.8	2.7	2.2	1.8	1.3	0.9	0.5
		20													3.5	3.3	3.1	2.9	2.8	2.7	2.6	2.3	2	1.5	1.1
40															2.7	2.6	2.5	2.4	2.2	2	1.7	1.2			
44	0							3.3	3.3	3.3	3.3	3.3	3.3	3.3	3.3	3	2.8	2.6	2.4	1.9	1.5	1.2	0.8	0.5	
	20													3.1	3	2.8	2.7	2.5	2.4	2	1.6	1.3	1	0.6	
	40														2.8	2.6	2.5	2.4	2.3	2.1	1.7	1.4	1.1	0.7	

Mainboom with Fixed Jib (Outrigger base 6.3x4.8m)																									
Ballast	Jiblength	Boomlength	Jibangle	Radius																					
				3	4	5	6	7	8	9	10	12	14	16	18	20	22	24	26	28	30	32	36	40	
15.2	9	11	0	10.5	10.5	10.5	10.5	10.5	10.5	10.4	9.5	8.1	7.1	6.3											
			20		10.5	10.5	10.5	9.9	9.4	8.9	8.5	7.8	7.2	6.8											
			40				8.9	8.5	8.1	7.8	7.5	7	6.7												
		30.1	0			10.5	10.5	10.5	10.1	9.6	9	8.1	7.3	6.4	5.1	4.2	3.4	2.8	2.3	1.8	1.5	1.2	0.7		
	20							8.1	7.7	7.3	6.7	6.2	5.8	5.4	4.5	3.7	3	2.5	2	1.6	1.3				
	40									6.4	5.9	5.5	5.2	4.9	4.7	3.9	3.2	2.6	2.1	1.7					
	41.6	0					6	6	6	6	5.7	5.2	4.8	4.4	4.1	3.5	2.9	2.4	2	1.6	1.3	0.7			
		20									5.2	4.9	4.5	4.3	4	3.7	3.2	2.6	2.2	1.8	1.4	0.9			
		40									4.4	4.2	3.9	3.7	3.5	3.4	2.8	2.3	1.9	1.5	0.9	0.5			
	44	0						5.4	5.4	5.4	5.3	4.9	4.5	4.2	3.8	3.5	2.9	2.4	1.9	1.5	1.2	0.7			
		20								4.9	4.6	4.3	4	3.8	3.5	3.2	2.6	2.2	1.8	1.4	0.8				
		40								4.3	4	3.8	3.6	3.4	3.2	2.8	2.3	1.9	1.5	0.9	0.5				
16	11	0	7.9	7.9	7.9	7.6	7.2	6.7	6.3	5.9	5.3	4.7	4.2	3.7	3.4	3.1	2.8								
		20						5.4	5.1	4.9	4.4	4.1	3.8	3.5	3.3	3.2	3.1								
		40									3.9	3.7	3.4	3.3	3.2	3.1									
	30.1	0				4.8	4.8	4.8	4.8	4.8	4.8	4.8	4.8	4.8	4.8	4.5	3.7	3.1	2.6	2.1	1.8	1.4	0.9	0.5	
		20									4.6	4.4	4.2	4	3.8	3.6	3.5	3	2.5	2.1	1.7	1.1	0.6		
		40										3.5	3.4	3.3	3.2	3.1	3	2.8	2.4	1.9	1.3				
	41.6	0						3.5	3.5	3.5	3.5	3.5	3.5	3.5	3.5	3.5	3.2	3	2.6	2.1	1.8	1.4	0.9	0.5	
		20													3.5	3.3	3.1	2.9	2.8	2.7	2.6	2.1	1.8	1.2	0.7
40															2.7	2.6	2.5	2.4	2.3	2.1	1.4	0.9			
44	0							3.3	3.3	3.3	3.3	3.3	3.3	3.3	3.3	3	2.8	2.5	2.1	1.7	1.4	0.8	0.5		
	20													3.1	3	2.8	2.7	2.5	2.4	2.1	1.7	1.1	0.7		
	40														2.8	2.6	2.5	2.4	2.3	2.2	2	1.4	0.8		